

# CHRISTINA PARKER

GALLERY

## CRAIG FRANCIS POWER WILD LIFE

I make hooked rugs that draw from the history and iconography of Folk Art to interrogate notions of “good” and “bad” taste, and how our evaluation of quality and value is governed by a classist, racist, sexist, and homophobic dominant cultural orthodoxy.

Rather than a hand-made approach to the production of these rugs and a reliance on *natural* materials and processes, recent developments in my practice have seen me embrace an industrialized method of working that foregrounds a mechanized power-tool (a tufting gun) as well as non-natural acrylic wool (a petroleum product).



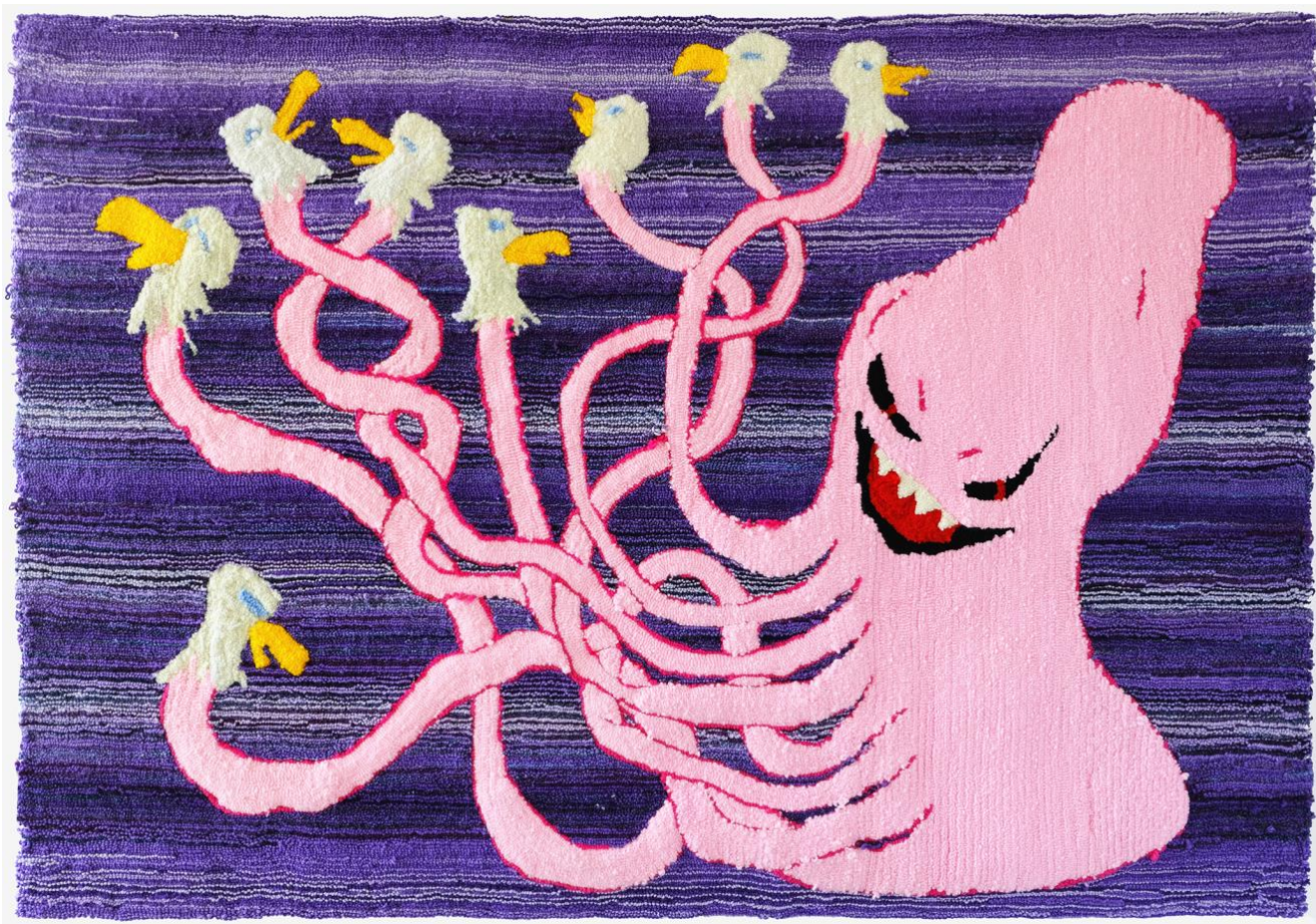
**Trophy**, Wool, burlap mounted over plywood, 24 × 18", 2023



**Love Is Colder Than Death**, Wool, monkscloth mounted over plywood, 72 × 48", 2023

What appears naïve, quaint, rustic, and romantic in each piece is in actuality the opposite. While what is grotesque, playful, and disturbed are just that. My work occupies a space that is both heartfelt and satirical at once.

The hooked rugs in *Wild Life* are influenced by imagery from Newfoundland and Labrador's cultural tourism industry, the brutalization of the environment through extractive resources, my own experience salmon-fishing and hunting in the province, and by the genres of Science Fiction and Horror vis-à-vis the climate crisis.



**Giant Ass Squid**, Wool, monkscloth mounted over plywood, 48 × 69.5", 2023

**CRAIG FRANCIS POWER** is a visual artist and writer from St. John's. His hooked rugs, videos, and installations have shown widely at galleries across Canada and internationally. In 2022 he was awarded the Cox & Palmer Pivotal Point Grant and is a previous nominee for the Sobey Art Award. The award-winning author of three previous books, his fourth novel, and a collection of poetry, are forthcoming.



**Blue Belton (Duke)**, Wool, monkscloth mounted over plywood, 37.5 × 36", 2023