

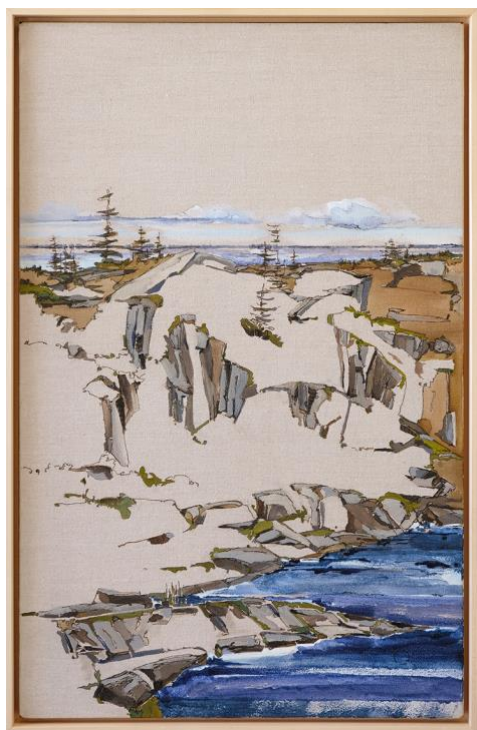
CHRISTINA PARKER

GALLERY

BARBARA HOUSTON UNDER THE SAME SKY

Under the Same Sky captures inland ponds and the skies above in a myriad of paintings inspired by rural Newfoundland. Painted from observations and memory, Barbara Houston's work evokes place through carefully curated materials in different mediums to display the environs of Newfoundland's Bonavista Peninsula.

Intention and suggestion comprise Houston's unique language communicating the importance of the land. Inland ponds, redolent of hunting and gathering, foraging and berry picking, with abundant fresh water; vast landscapes, blanketed by endless skies, remind us of our stewardship obligations – place must be held conscious of the issues of the day, both local and global.



Inland Pond, 50km, Acrylic, archival ink on Belgian linen, 32 × 20", 2023



Under the Same Sky, Acrylic, archival ink, Japanese graphite on raw Belgian linen, VERSO, 48" diameter, 2023

Houston's techniques include the use of positive and negative space, the absence of paint, painting in reverse and seaming materials to emphasize the power of the horizon. "Painted colour" of each material is enhanced by engaging the warp and weft of Belgian linen and the grain of wood panels, and by changing the ground colour in the canvas. Through form and scale Houston's work enhances these two and three dimensional expressions of place, imbued with meaning found in the landscape of Newfoundland's history, culture, tradition.

Barbara Houston's landscape paintings reflect a humanistic perspective complemented by a refined and unwavering contemporary vision. Houston's creative work distills her formal education in design and architecture and is highly contextual. *Under the Same Sky* connects her to her prairie roots, big skies and distant horizons, much like those where she lives and works in her new home and studio in Bonavista, Newfoundland.



Edge, 3, VERSO, VERSO acrylic, archival ink in reverse then restretched to finish, 32 × 38", 2020

BARBARA HOUSTON's creative practice is based in Bonavista, Newfoundland.

Born in Saskatchewan, Houston is influenced by Modernist Art on the Prairies and landscape painting as expression of people and place, community and belonging. Leaving the Prairies, she studied at Parson's School of Design in New York City and holds a Master of Architecture and Bachelor of Environmental Studies from the University of Manitoba.

Leading her award winning design firm based in Vancouver for twenty years, she gathered momentum, collecting skills and observations to create space and discover opportunity. Houston's full time creative practice in Newfoundland was the culmination of a cross country journey, arriving in Bonavista in 2019 establishing BarbaraHouston ArtStudio.

Barbara Houston's paintings are in private collections across North America and Europe.